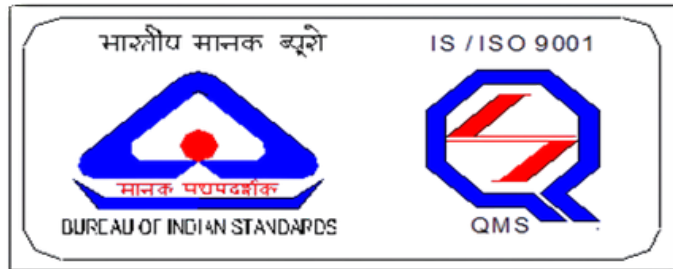
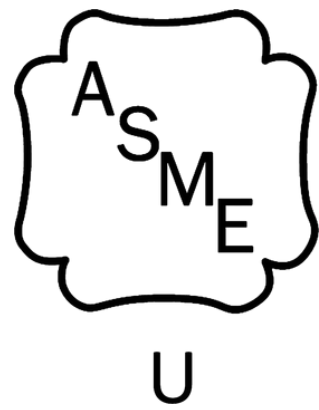
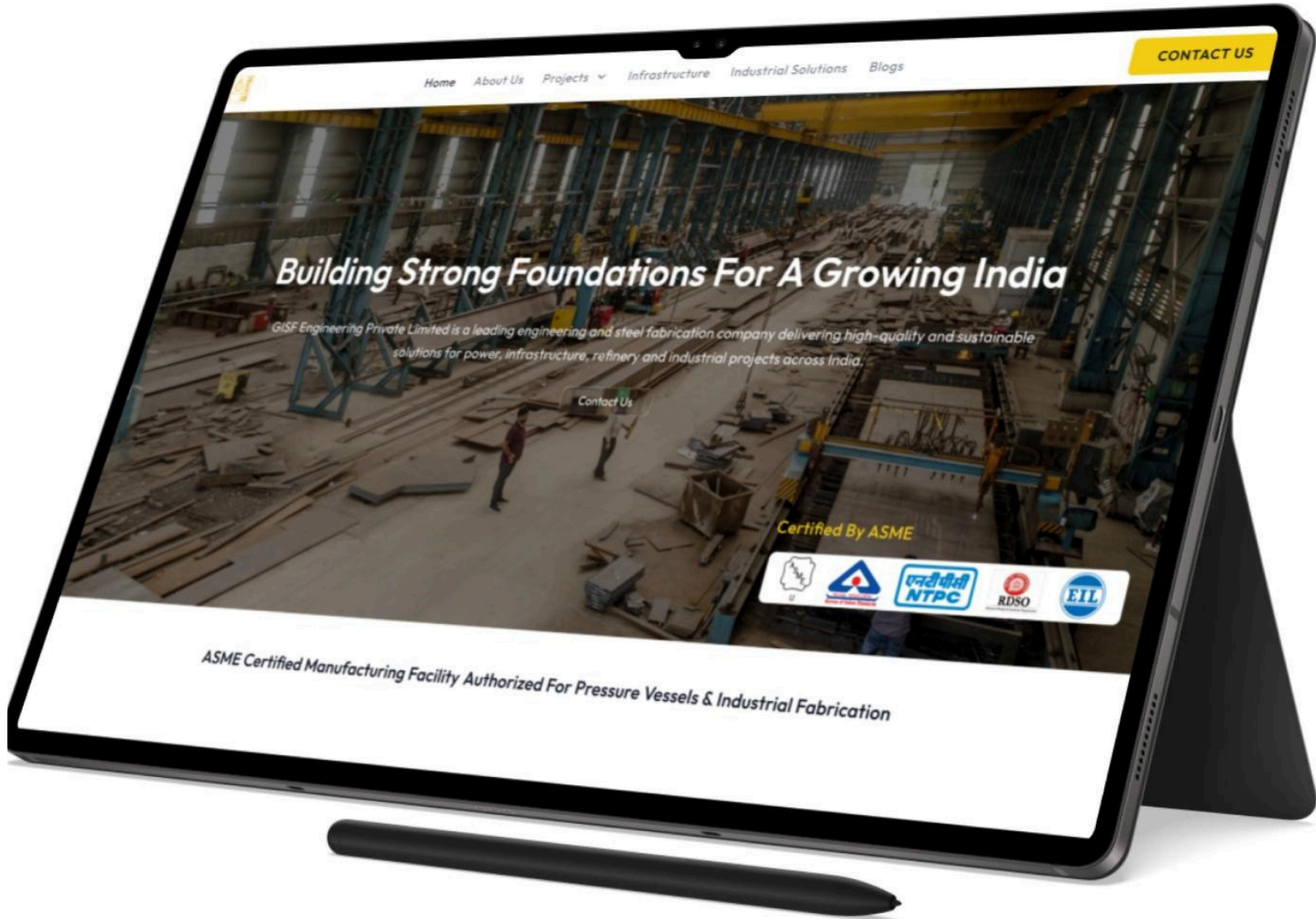




**Leading  
Manufacturer**

**Pressure Vessels**

**Structural Steel**



# GISF LEGACY

**GISF ENGINEERING PRIVATE LIMITED** Established in **1972** (Formerly) known as **GREAT INDIA STEEL FABRICATORS** located in the Industrial town of **Yamunanagar in Haryana.**

Founded in 1972

Boiler Components  
IBR 1978

Refineries  
EIL 1992

Thermal Power Plant  
BHEL NTPC 2004

New Plant at Ishapur  
2013

RDSO Bridges  
2016

Pressure Vessels  
ASME 2025

LEGACY



# Infrastructure Synopsis

**19 Acres** of  
Industrial Land

Shed 1  
**180 M X 40 M**

Shed 2  
**60 M X 28 M**

**INFRA**

**80 Tons** Lift Cap.

**12 Nos** EOT Cranes  
**7** Mobile Hydras

**Separate SS**  
Fabrication Bay

Dedicated and  
Experienced Team



# Facilities at GISF

CNC Plate Processor

CNC Plasma Cutting

Hydraulic Plate Rolling

Automatic Column Boom SAW

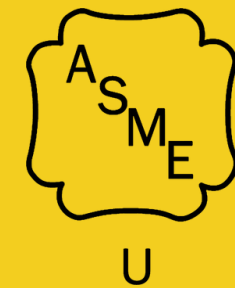
Hydraulic Plate Bending

CNC Drilling





KCD's Design now Manufactured in India  
Through Strategic Partnership with  
**GISF Engineering Pvt Ltd**



**RDSO**

Research Design & Standards Organisation





*Kansas City Deaerator*  
**C O M P A N Y**  
www.deaerator.com

## **KANSAS CITY DEAERATOR**

Global Leader in  
Deaeration Technology



Kansas City Deaerator Company was instrumental in reinstating the Heat Exchange Institute for deaerators in 1989.



Kansas City Deaerator Company was instrumental in updating and rewriting the ASTM PTC 12.3 for deaerator testing.



Kansas City Deaerator Company recommends the NACE standards and introduced the NACE requirement into the Heat Exchange Institute specifications for deaerators.



Kansas City Deaerator Company has provided a study to EPRI for Flow Accelerated Corrosion along with deaerator vessel considerations.

**Kansas City Deaerator Technology**

**Now Manufactured in India**

**By GISF Engineering Pvt Ltd**





**KCD Provides:**

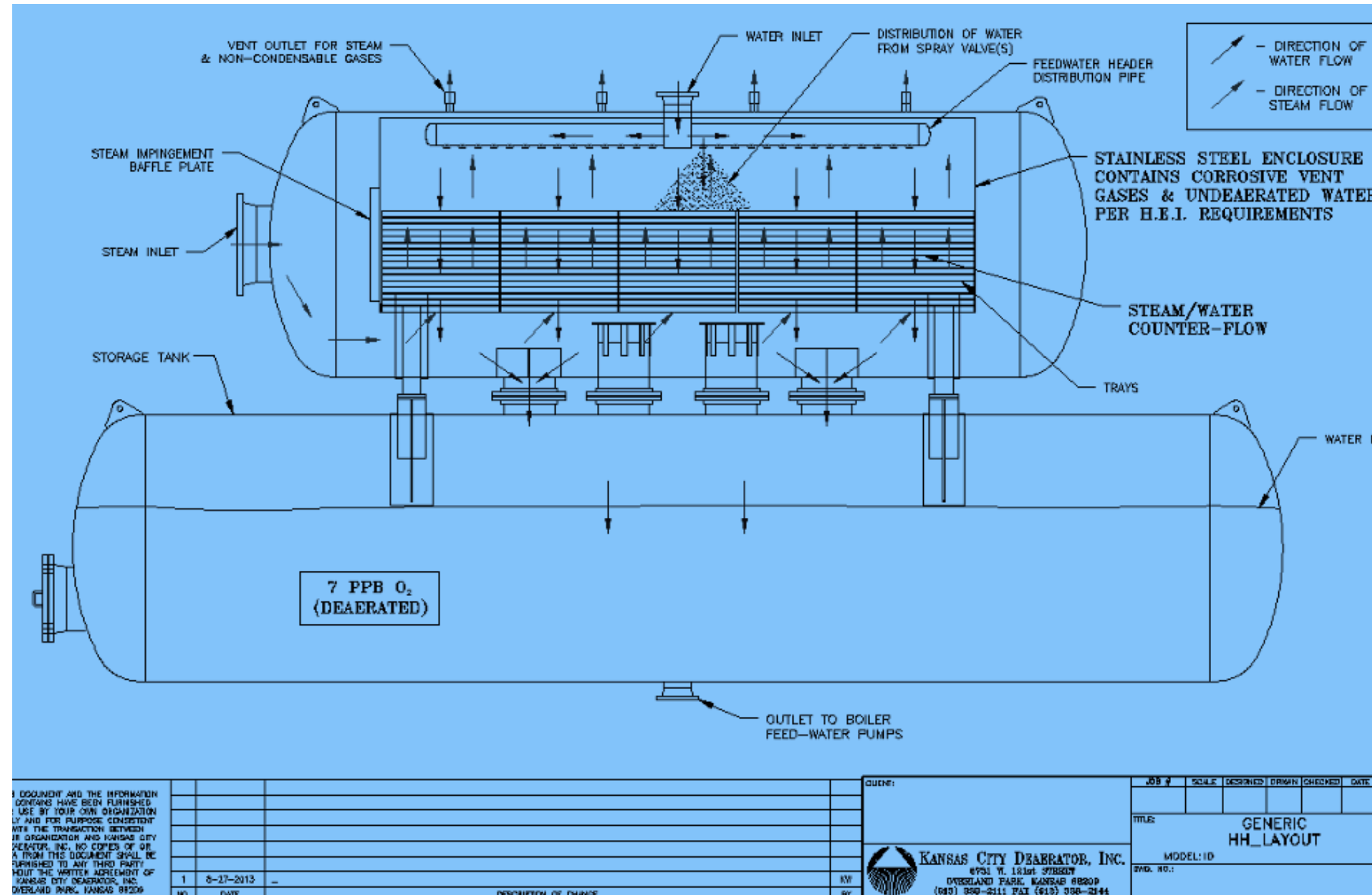
Proven Global Designs  
Thermal Performance Expertise  
Technology Support



**GISF Provides:**

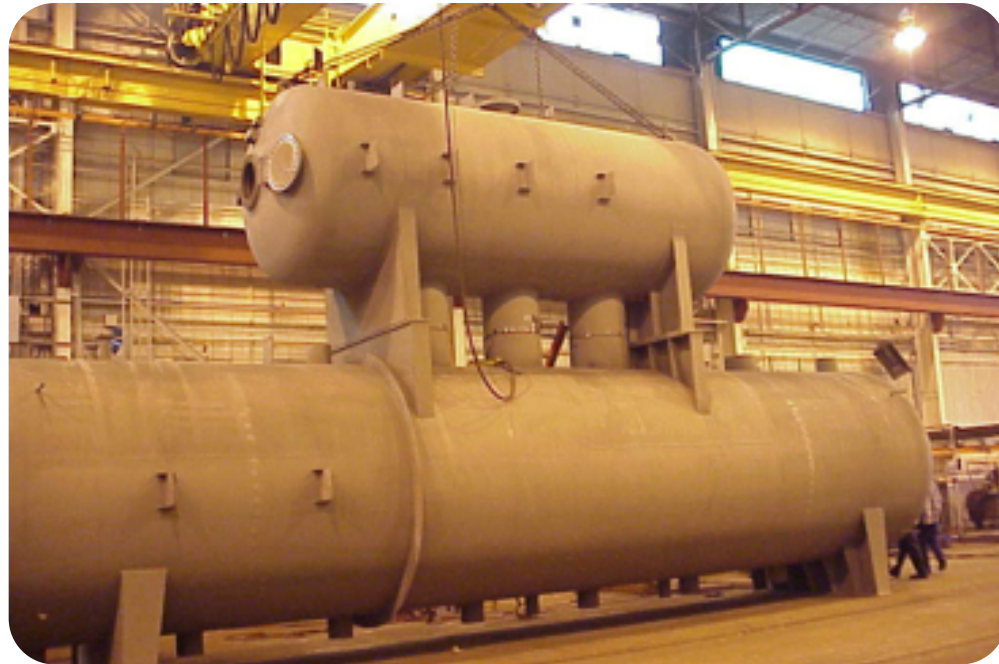
ASME U Stamp  
IBR Certification  
Local Production  
Faster Delivery  
Project Support

# DESIGN GOALS & THERMAL PERFORMANCE



- 7 PPB O<sub>2</sub> Design Guarantee
- Zero CO<sub>2</sub> at Outlet
- Heats Inlet Water to Saturation Temperature
- Operates Quietly at All Loads
- Zero Vibration Performance

# Product Range



Horizontal Tray Deaerator  
Capacity: 16,000,000 lb/hr  
Best for Mega Power Plants



Horizontal Spray Deaerator  
Capacity: 2,000,000 lb/hr  
Not Recommended for  
Higher Capacity Power Plants



Vertical Tray Deaerator  
Capacity: 1,000,000 lb/hr  
Best for Refineries and  
Utility Thermal Plants





**Steel Plant**



**Refineries**



**Power Plant**



**Rubber Industries**



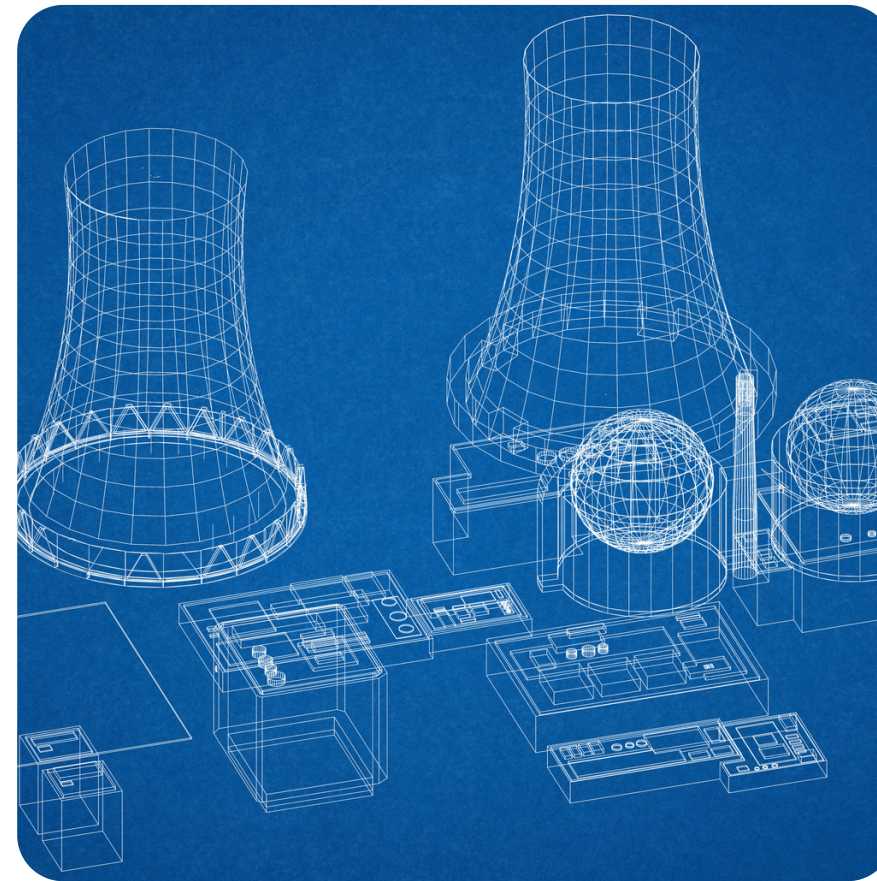
**Fertilizer Plant**



**Process Manufacturing Industries**



**Railway Bridges**



**Power Plant Structures**



**Roadways Bridges**



Globally Proven Technology  
Reduced Lead Time  
Local Manufacturing  
Project Support

# GLOBAL TECHNOLOGY MADE IN INDIA

## Contact Information

- **COMPANY:** GISF Engineering Pvt Ltd
- **Website:** [www.greatindia.co.in](http://www.greatindia.co.in)
- **Address:** S.K 38 Mile Stone (SH-6) Sharanpur Kurukshetra Road, Village Ishapur, Yamuna Nagar (HR) - 135001